

JANUARY 13

How do you know when you should find the area in terms of y instead of in terms of x ?

• $X = \underline{\hspace{2cm}}$
└──────────┘

find the area in terms of y

- horizontal rectangles
- bounds are y -values

JANUARY 13

Students will verbally explain how to find the area bounded by two functions

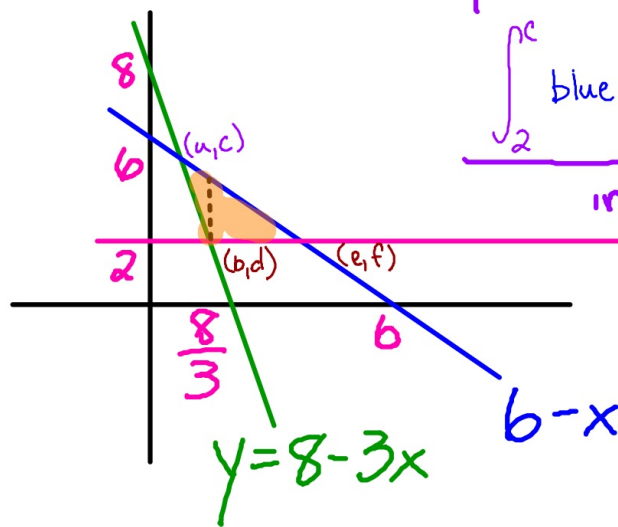
(using the words:
above, below, right, left...)

#30

$$y = 8 - 3x$$

$$y = 6 - x$$

$$y = 2$$



change
equations
to $x =$

$$\int_2^c \text{blue} - \text{green} \, dy$$

in terms of y

in terms of x $\left[\int_a^b \text{blue} - \text{green} \, dx + \int_b^e \text{blue} - 2 \, dx \right]$