A background image showing the London Eye Ferris wheel in the distance under a blue sky with white clouds. In the foreground, there is a statue of a person on a horse, likely the Fourth Horseman of the Apocalypse, on a pedestal. A crowd of people is visible at the bottom of the image.

October 4

What questions on the test were you best prepared for?

What questions on the test were you least prepared for?

October 4

Students will verbally explain how to use the derivative to give characteristics of a function

(using the words:
increasing, decreasing, positive, negative, zero...)

Draw a line tangent to each increasing function



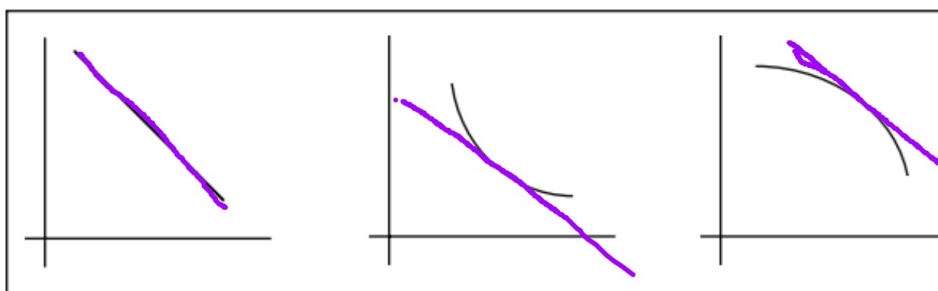
What is true about the slopes of your tangent lines?

They are positive (+ orange)

How is the derivative related to the function?

If the derivative is positive
then the function is increasing.

Draw a line tangent to each decreasing function



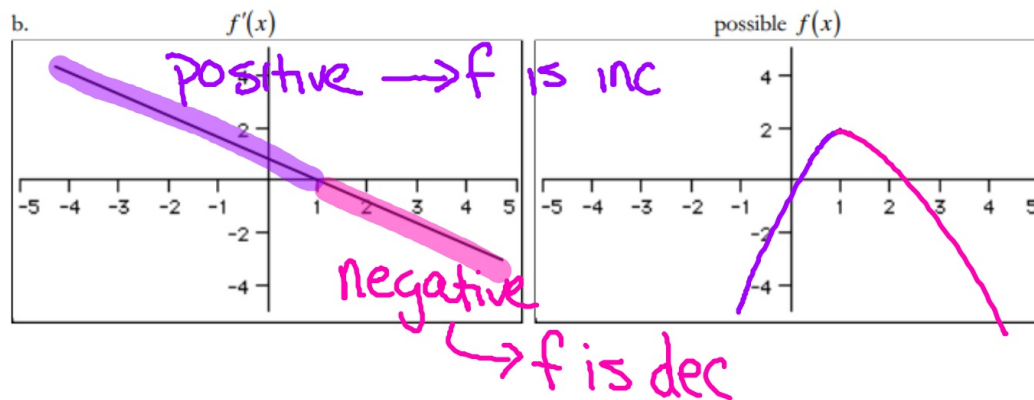
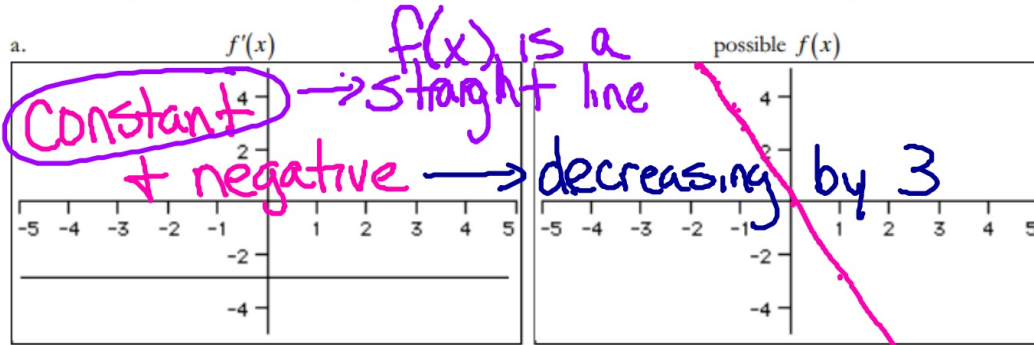
What is true about the slopes of your tangent lines?

They are negative

How is the derivative related to the function?

If the derivative is negative,
the function is decreasing

Given a graph of $f'(x)$ sketch a possible graph of $f(x)$



Given a graph of $f'(x)$ sketch a possible graph of $f(x)$

