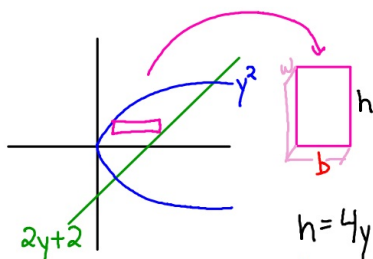


October 15

SWBAT:

Find the volume by slicing

The base of a solid is bound by $x = y^2$ and $x = 2y + 2$ the cross-sections perpendicular to the y-axis are rectangles with height equal to $4y$



$$y^2 = 2y + 2$$

$$y^2 - 2y - 2 = 0$$

$$y = 2.732, -0.732$$

$$h = 4y$$

$$b = 2y + 2 - y^2$$

$$w = dy$$

$$V = \int_{-0.732}^{2.732} 4y(2y + 2 - y^2) dy$$
$$= 27.713$$