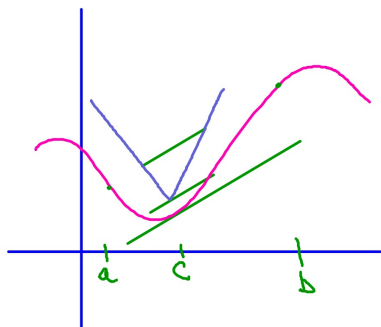


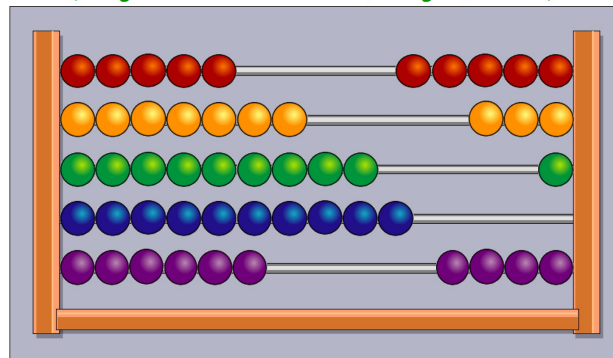
April 28

What does the Mean Value Theorem say?

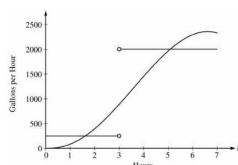


April 28

Students will verbally explain how to solve problems with calculus (using the words: derivative, integral, solve...)



2007 AP[®] CALCULUS AB FREE-RESPONSE QUESTIONS



2. The amount of water in a storage tank, in gallons, is modeled by a continuous function on the time interval $0 \leq t \leq 7$, where t is measured in hours. In this model, rates are given as follows:

- (i) The rate at which water enters the tank is $f(t) = 1000t \sin(\pi t)$ gallons per hour for $0 \leq t \leq 7$.

- (ii) The rate at which water leaves the tank is

$$g(t) = \begin{cases} 250 & \text{for } 0 \leq t < 3 \\ 2000 & \text{for } 3 < t \leq 7 \end{cases} \text{ gallons per hour.}$$

The graphs of f and g , which intersect at $t = 1.617$ and $t = 5.076$, are shown in the figure above. At time $t = 0$, the amount of water in the tank is 5000 gallons.

- (a) How many gallons of water enter the tank during the time interval $0 \leq t \leq 7$? Round your answer to the nearest gallon.
- (b) For $0 \leq t \leq 7$, find the time intervals during which the amount of water in the tank is decreasing. Give a reason for each answer.
- (c) For $0 \leq t \leq 7$, at what time t is the amount of water in the tank greatest? To the nearest gallon, compute the amount of water at this time. Justify your answer.

WRITE ALL WORK IN THE PINK EXAM BOOKLET.

© 2007 The College Board. All rights reserved.
Visit apcentral.collegeboard.com (for AP professionals) and www.collegeboard.com/apcentral (for students and parents).

GO ON TO THE NEXT PAGE.

-3-

2007 AP[®] CALCULUS AB FREE-RESPONSE QUESTIONS

x	$f(x)$	$f'(x)$	$g(x)$	$g'(x)$
1	6	4	2	5
2	9	2	3	1
3	10	-4	4	2
4	-1	3	6	7

3. The functions f and g are differentiable for all real numbers, and g is strictly increasing. The table above gives values of the functions and their first derivatives at selected values of x . The function h is given by $h(x) = f(g(x)) - 6$.

- (a) Explain why there must be a value c for $1 < c < 3$ such that $h'(c) = -5$.
- (b) Explain why there must be a value c for $1 < c < 3$ such that $h'(c) = -5$.
- (c) Let w be the function given by $w(x) = \int_1^{f(x)} f(t) dt$. Find the value of $w'(3)$.
- (d) If g^{-1} is the inverse function of g , write an equation for the line tangent to the graph of $y = g^{-1}(x)$ at $x = 2$.

WRITE ALL WORK IN THE PINK EXAM BOOKLET.

END OF PART A OF SECTION II

© 2007 The College Board. All rights reserved.
Visit apcentral.collegeboard.com (for AP professionals) and www.collegeboard.com/apcentral (for students and parents).

-4-

AP[®] CALCULUS AB 2007 SCORING GUIDELINES

Question 2

The amount of water in a storage tank, in gallons, is modeled by a continuous function on the time interval $0 \leq t \leq 7$, where t is measured in hours. In this model, rates are given as follows:

- (i) The rate at which water enters the tank is $f(t) = 1000t \sin(\pi t)$ gallons per hour for $0 \leq t \leq 7$.

- (ii) The rate at which water leaves the tank is

$$g(t) = \begin{cases} 250 & \text{for } 0 \leq t < 3 \\ 2000 & \text{for } 3 < t \leq 7 \end{cases} \text{ gallons per hour.}$$

The graphs of f and g , which intersect at $t = 1.617$ and $t = 5.076$, are shown in the figure above. At time $t = 0$, the amount of water in the tank is 5000 gallons.

- (a) How many gallons of water enter the tank during the time interval $0 \leq t \leq 7$? Round your answer to the nearest gallon.
- (b) For $0 \leq t \leq 7$, find the time intervals during which the amount of water in the tank is decreasing. Give a reason for each answer.
- (c) For $0 \leq t \leq 7$, at what time t is the amount of water in the tank greatest? To the nearest gallon, compute the amount of water at this time. Justify your answer.

Amount = \int rate

- (a) $\int_0^7 f(t) dt = 8264$ gallons

- (b) The amount of water in the tank is decreasing on the intervals $0 \leq t \leq 1.617$ and $3 \leq t \leq 5.076$ because $f(t) < g(t)$ for $0 \leq t < 1.617$ and $3 < t < 5.076$.

- (c) Since $f(t) - g(t)$ changes sign from positive to negative only at $t = 3$, the candidates for the absolute maximum are at $t = 0, 3$, and 7 .

t (hours)	gallons of water
0	5000
3	$5000 + \int_0^3 f(t) dt - 250(3) = 5126.591$
7	$5126.591 + \int_3^7 f(t) dt - 2000(4) = 4513.807$

The amount of water in the tank is greatest at 3 hours. At that time, the amount of water in the tank, rounded to the nearest gallon, is 5127 gallons.

2: \int : integral
1: answer

2: \int : intervals
1: reason

5: 1: identifies $t = 3$ as a candidate
1: integrated
1: amount of water at $t = 3$
1: amount of water at $t = 7$
1: conclusion

$$\int_0^3 f(t) - 250 dt = 250 \times 3 = 250(3)$$

© 2007 The College Board. All rights reserved.
Visit apcentral.collegeboard.com (for AP professionals) and www.collegeboard.com/apcentral (for students and parents).