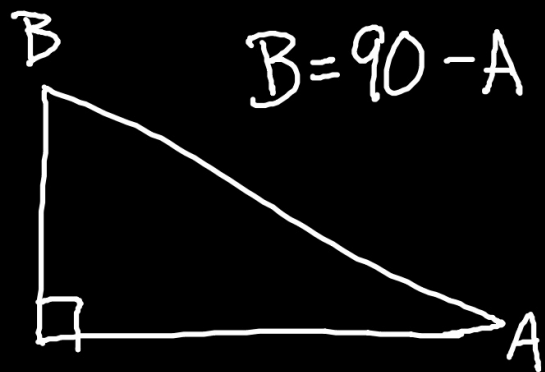


September 14

SWBAT:

Discover and apply
trig identities

$\sin(A)$	-----	$\cos(B)$
$\cos(A)$	-----	$\sin(B)$
$\tan(A)$	-----	$\cot(B)$
$\csc(A)$	-----	$\sec(B)$
$\sec(A)$	-----	$\csc(B)$
$\cot(A)$	-----	$\tan(B)$



$$\sin(\theta) = \cos(90^\circ - \theta)$$

$$\cos(\theta) = \sin(90^\circ - \theta)$$

$$\tan(\theta) = \cot(90^\circ - \theta)$$

$$\cot(\theta) = \tan(90^\circ - \theta)$$

$$\sec(\theta) = \csc(90^\circ - \theta)$$

$$\csc(\theta) = \sec(90^\circ - \theta)$$

Cofunction
Complementary
angles